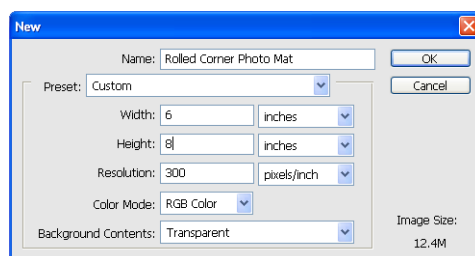


Creating Folded and Rolled Corners in Photoshop Elements 5.0 (Part A – Folded Corners)

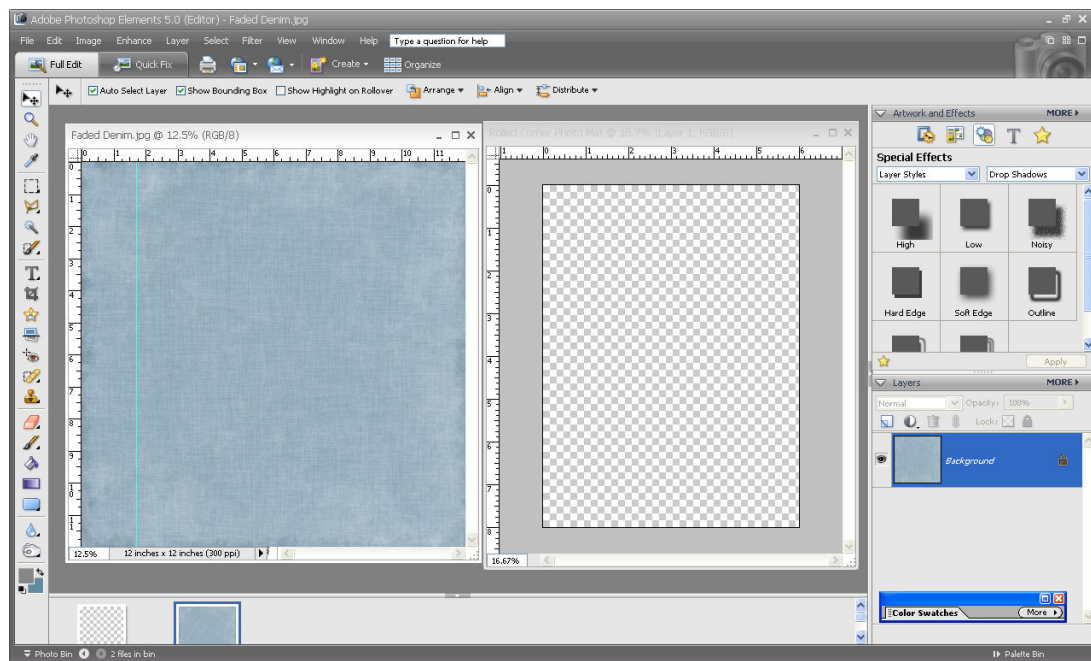
This tutorial will teach you how to create rolled and folded corners, which can be used to embellish page corners, to creatively mat your photos or to roll the corners of your actual photos. This tutorial assumes you are familiar with the basics of using Photoshop Elements, including opening and setting the size and resolution of new documents, selecting tools, moving file windows within Photoshop Elements, zooming in and out, and creating and reorganizing layers.

Let's get started!

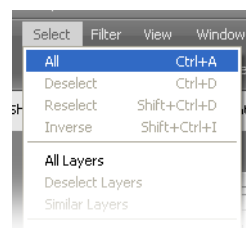
1. Open a new document. For this tutorial, I'm creating a photo mat for a 5x7 photo, so my document size is 6x8, with a resolution of 300dpi. If you are creating a roll from the paper that will be your page background, create a file in the size you would like your finished page to be.



2. Open the file containing the paper you want to create your rolled paper from. I'm using a background paper called "Faded Denim" from my The Blues paper pack. You should now have two files open. Move the file windows so they are side to side and you can see both.

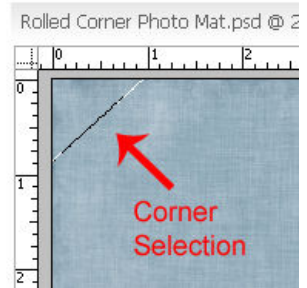


3. Select the Move tool from your toolbar. Left-click on the paper image, hold your mouse button down and drag the paper into your rolled corner document window. If the paper you have chosen is larger than the document size you are using for your rolled corner, you will notice when you zoom out that there are dotted lines showing in the grey space around your rolled corner document. The dotted lines show the dimensions of your paper, and if you left-click on the paper and hold your mouse button down, you can move the paper around until the portion you would like to use is showing in your document window. To remove any extra paper from outside the document window, click Select > All from the main menu. You will notice that dotted lines, often referred to as "marching ants" appear around the outer edge of your rolled edge document window. Click Edit > Crop and your document will be trimmed to include only what is showing inside the document window.



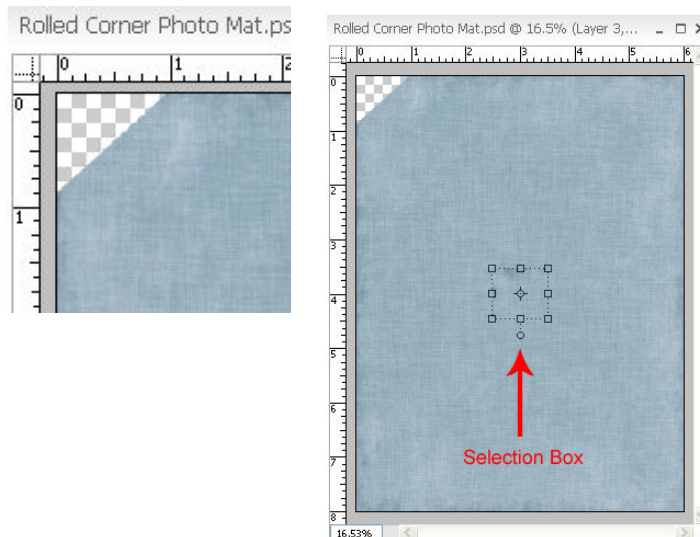
4. The first step in creating a rolled corner is to select the corner of your paper you would like to fold.

- a. From your toolbar, select the Polygon Lasso tool, which is part of the Lasso tool group. (If your tool bar shows an oval shaped Lasso tool, left-click and hold down the mouse button on the Lasso tool, until a fly-out menu appears. From that menu, select the Polygon Lasso tool.)
- b. Select a triangular shaped piece from the corner of your paper. To make a selection, position the tool where you would like the first corner of your triangle to be and click, then move to the next corner and click again, continue until you have selected the full triangle. At this point, you should see a selection line around your triangle corner.

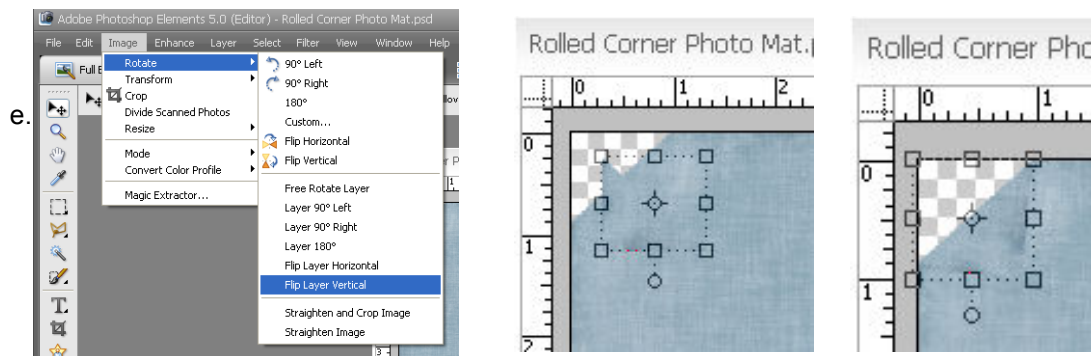


5. Next you are going to fold down the corner.

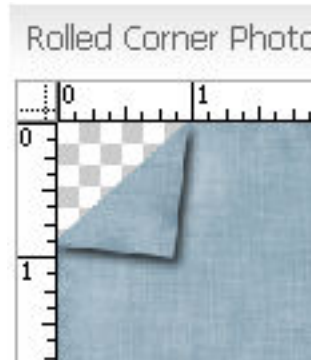
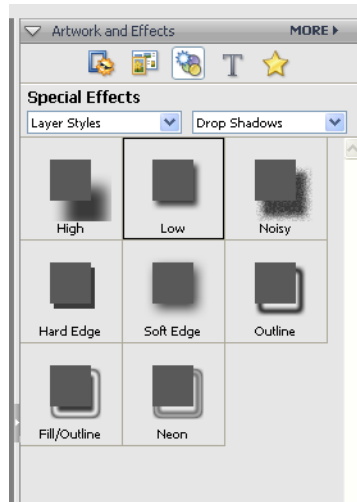
- a. In the Layers Palette, make sure the layer containing your paper is selected. From the main menu, select Edit > Cut. The area you selected will disappear, as shown.
- b. From the main menu, select Edit > Paste and your corner will reappear in the centre of your document, on a new layer. Depending on the pattern of your paper, the corner may be difficult to see, but the selection box lets you know where it is.



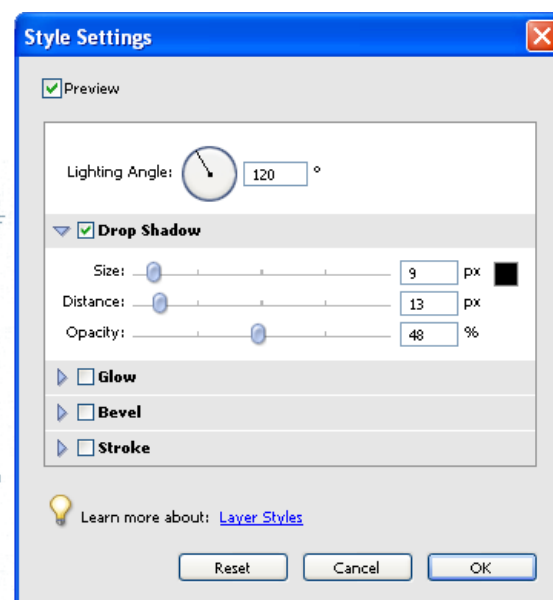
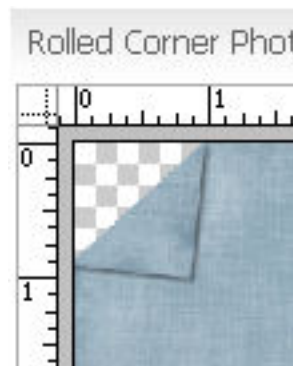
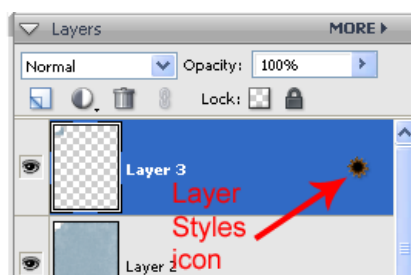
- c. Make sure the layer containing your corner is selected. From the main menu, select Image > Rotate > Flip Layer Vertical. This will flip the corner, which is the first step in folding it.
- d. Next, select the Move tool and move the corner up into the area it was originally cut from. Position your cursor slightly outside of one of the squares in the corner of the selection box, so it changes to a curved, double arrow. This will let you rotate the corner so the cut edges line up. Once your cursor has changed, click and hold, then drag the cursor in a semi-circle, which will rotate your corner. Continue rotating until the cut edge of the corner is at the same angle as the cut edge of your paper. Using the move tool, move the corner so the two cut edges line up.



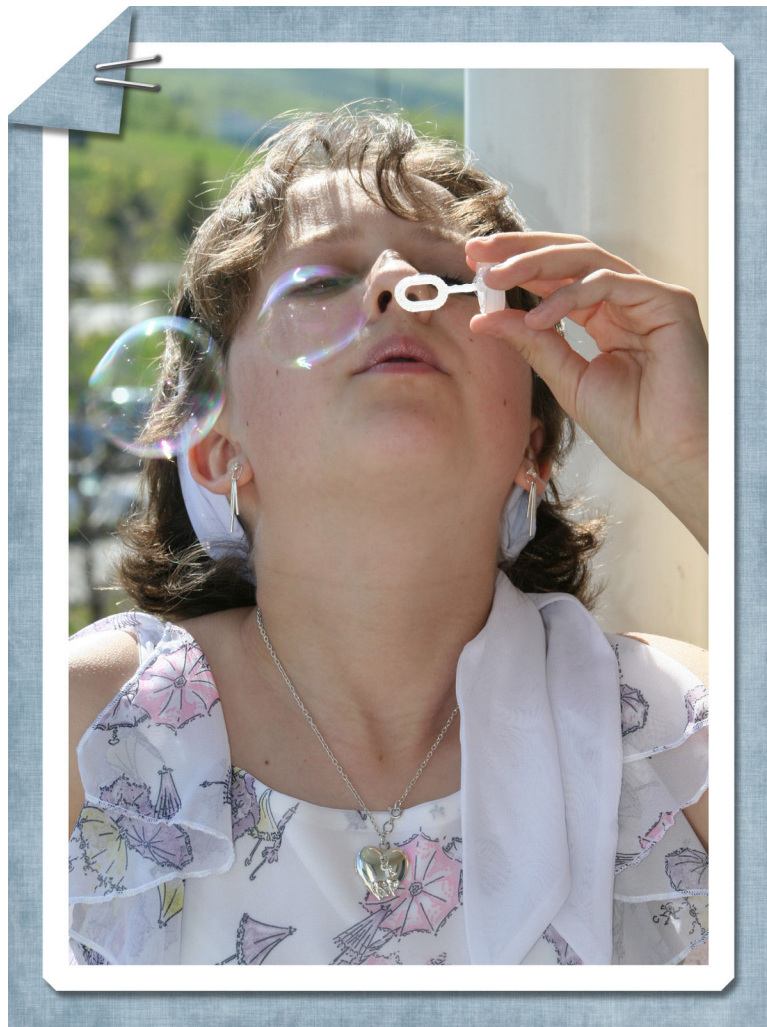
6. At this point, if you would like to simply fold your corner, all that's left is adding a slight drop shadow. (If you would like to roll your corner, skip these steps and go to Part B of the tutorial.)
 - a. On your Artwork and Effects palette, click the Apply Artwork, Effects and Layer Styles icon. (If your Artwork and Effects palette is not visible, select Window > Artwork and Effects from the main menu.)
 - b. From the first drop-down menu, select Layer Styles. From the second drop down menu, select Drop Shadows.
 - c. Ensure the layer containing your corner is selected in the Layers Palette.
 - d. Double click on the Low layer style. A small drop shadow will appear on your corner, separating it slightly from the rest of the paper.



- e. When you are working with drop shadows, the larger the shadow is, the more dimension it will appear to have. In this case, since you are folding a thin piece of paper, the drop shadow should be fairly small. To adjust the size of the drop shadow, double click on the Layer Styles icon on the corner layer on your Layers Palette. The Style Settings dialogue box will appear. From here you can adjust the size, distance and opacity of the drop shadow to suit you. I have used the settings shown below, and you can see the difference it made on my folded corner.



7. That completes your folded corner. In the sample shown below, I tucked a photo into the fold and added a couple staples to hold everything in place.



In Part B, you will learn how to turn your folded corner into a rolled corner.